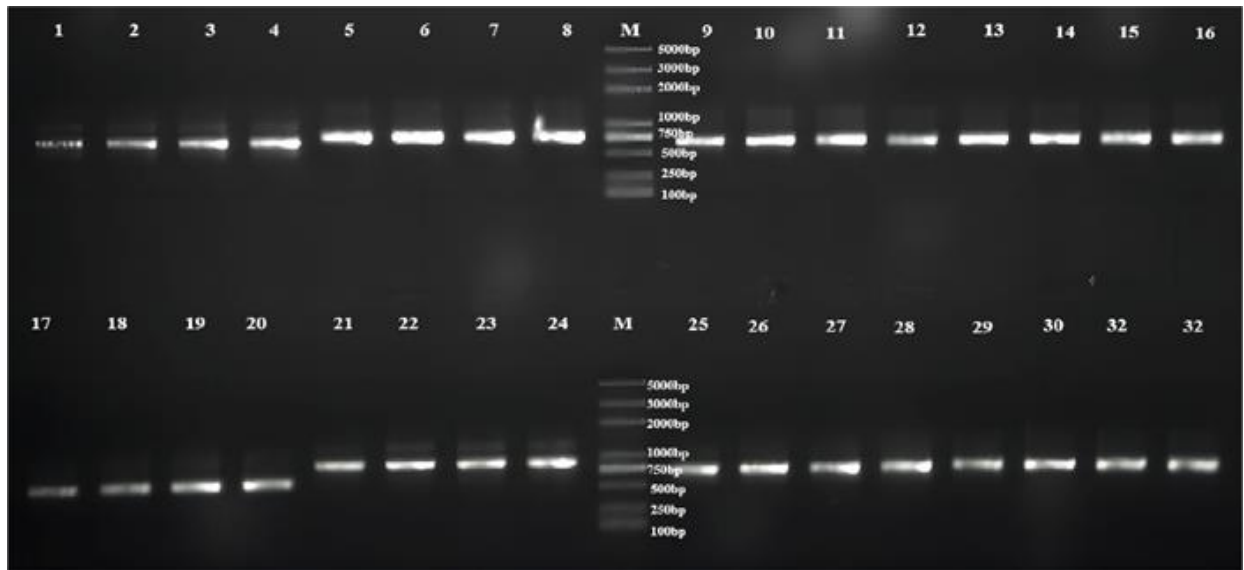


Appendix 1. The Primers for Multilocus Sequence Typing Test

gene	Primer 5' - 3'
<i>dinB-F</i>	GTTTTCCCAGTCACGACGTTGTATGAGAGGTGAGCAATGCGTA
<i>dinB-R</i>	TTGTGAGCGGATAACAATTTCCGTAGCCCCATCGCTTCCAG
<i>icd-F</i>	GTTTTCCCAGTCACGACGTTGTAATTCGCTTCCCGGAACATTG
<i>icd-R</i>	TTGTGAGCGGATAACAATTTTCATGATCGCGTCACCAAAYTC
<i>pabB-F</i>	GTTTTCCCAGTCACGACGTTGTAAATCCAATATGACCCGCGAG
<i>pabB-R</i>	TTGTGAGCGGATAACAATTTCCGGTTCAGTTCGTTCGATAAT
<i>polB-F</i>	GTTTTCCCAGTCACGACGTTGTAGGCGGCTATGTGATGGATTC
<i>polB-R</i>	TTGTGAGCGGATAACAATTTCCGGTGGCATCAGAAAACGGC
<i>putP-F</i>	GTTTTCCCAGTCACGACGTTGTACTGTTTAACCCGTGGATTGC
<i>putP-R</i>	TTGTGAGCGGATAACAATTTTCGCATCGGCCTCGGCAAAGCG
<i>trpA-F</i>	GTTTTCCCAGTCACGACGTTGTAGCTACGAATCTCTGTTTGCC
<i>trpA-R</i>	TTGTGAGCGGATAACAATTTTCGCTTTCATCGGTTGTACAAA
<i>trpB-F</i>	GTTTTCCCAGTCACGACGTTGTACACTATATGCTGGGCACCGC
<i>trpB-R</i>	TTGTGAGCGGATAACAATTTCCCTCGTGCTTTCAAAATATC
<i>uidA-F</i>	GTTTTCCCAGTCACGACGTTGTACATTACGGCAAAGTGTGGGTCAA
	T
<i>uidA-R</i>	TTGTGAGCGGATAACAATTTCCCATCAGCACGTTATCGAATCCTT



Appendix 2. Electrophoretogram of the eight keepinghouse genes for MLST (The sequences of genes loaded in each set of lanes 1-8,9-16,17-24,25-32 were *dinB*, *icd*, *pabB*, *polB*, *putP*, *trpA*, *trpB*, *uidA* respectively, corresponding to strains 93, 135, AD66, ADPW66, with lanes 1-4, 5-8, 9-12, 13-16, 17-20, 21-24, 25-28, 29-32 assigned to the spective strains).